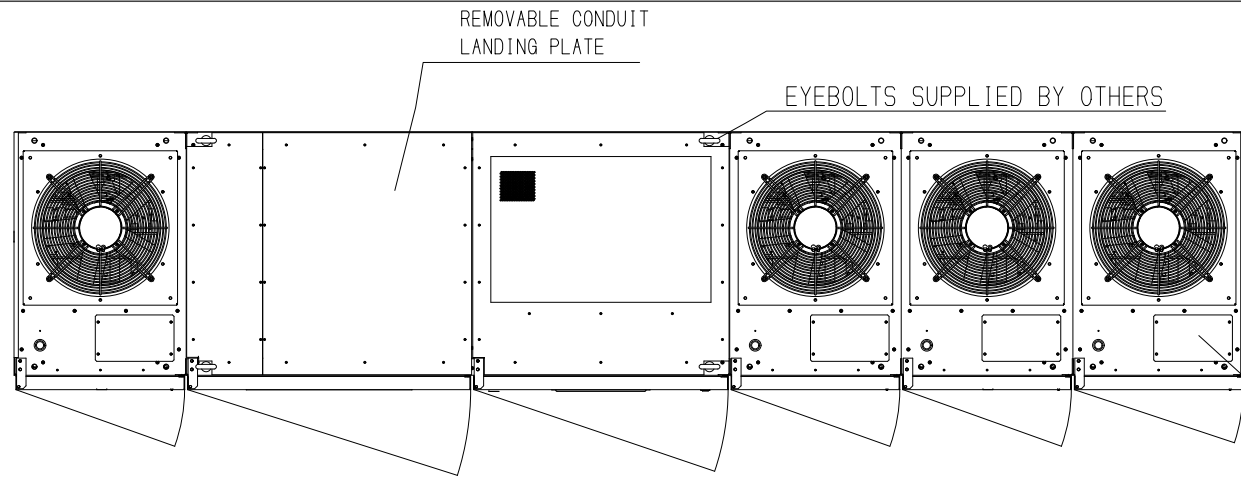


BOTTOM CABLE ENTRY  
CROSS SECTION A-A



R23.2" DOOR SWING    R39.0" DOOR SWING    R35.0" DOOR SWING    R23.2" DOOR SWING

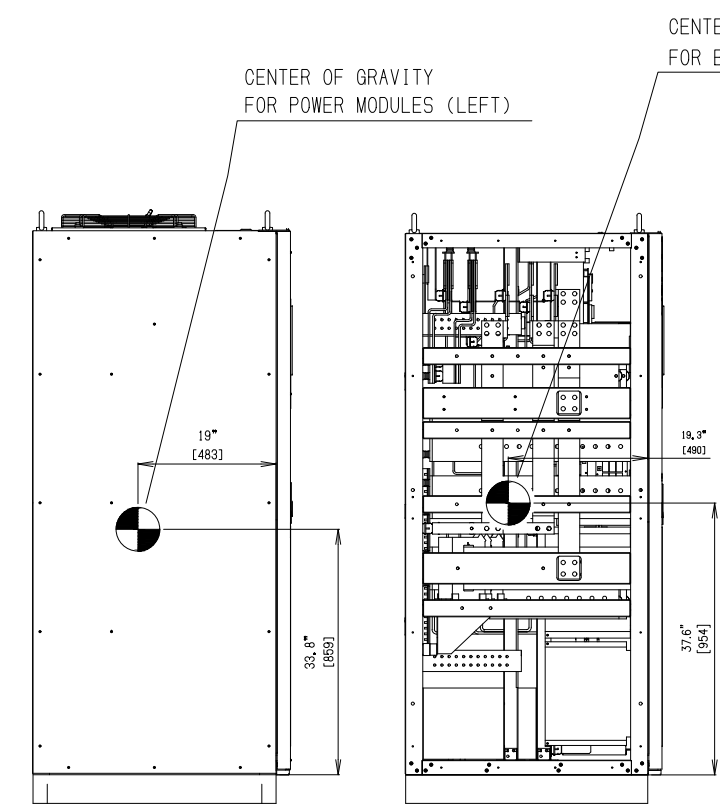
TOP VIEW

NOTES

1. DIMENSIONS ARE SHOWN IN INCHES\* [MILLIMETERS].
2. SIDE CLEARANCE OF 1" [25] IS REQUIRED FOR CABINETS EXCEPT WHEN ALIGNED WITH OTHER CABINETS IN THE SYSTEM.
3. CABINET SHOULD BE MAINTAINED UPRIGHT WITHIN ±15° DURING HANDLING.
4. EACH BASE HAS 2 OR 4 × 0.8" [20] DIAMETER HOLES TO FIX UPS ON THE GROUND. ONLY THE OUTER HOLES ON THE FRONT AND BACK OF THE CHANNEL ARE NECESSARY FOR MOUNTING.
5. UNIT WEIGHT

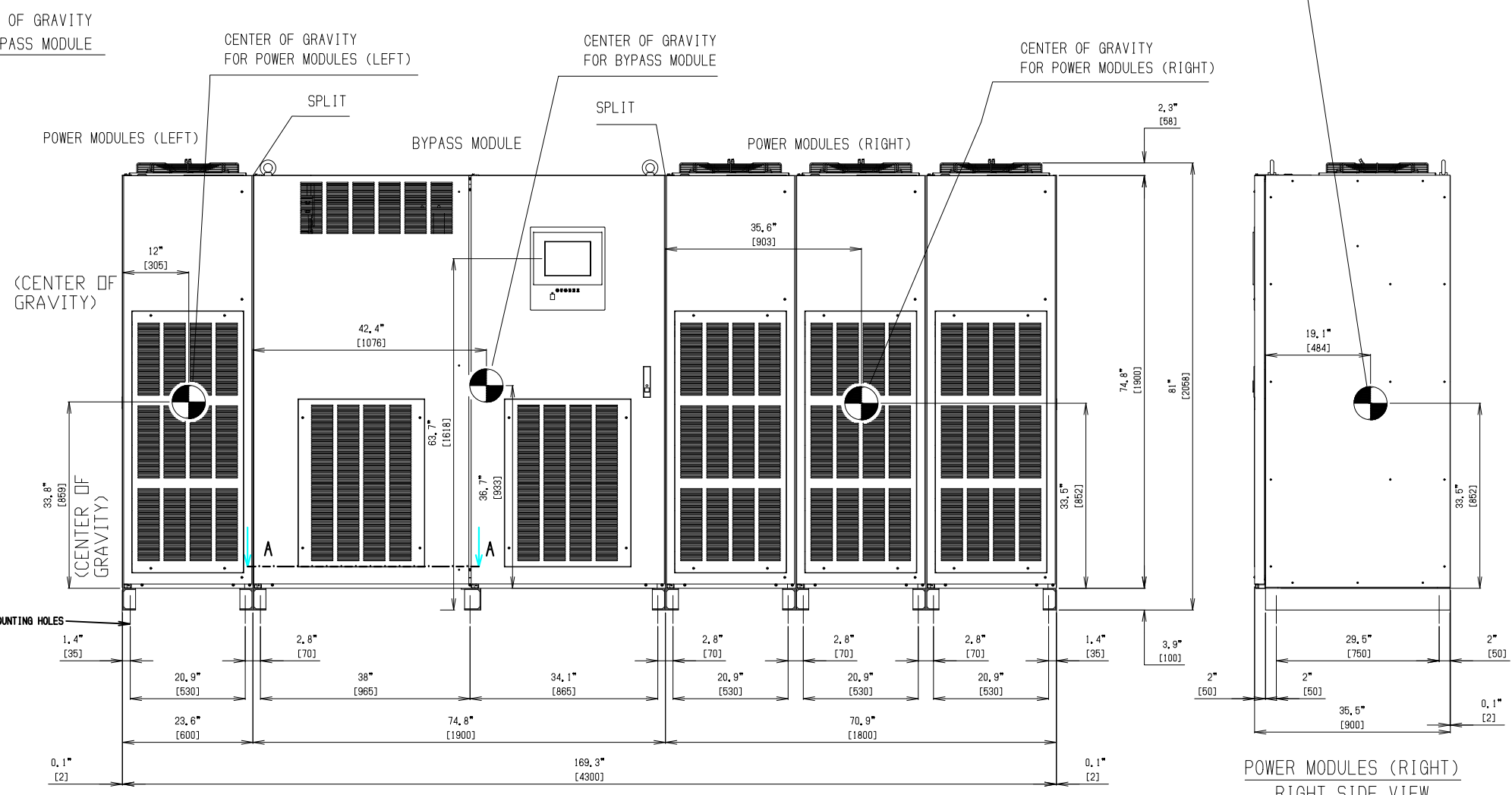
UPS MODULES (RIGHT)	5,200LBS (2,360kg)
UPS MODULES (LEFT)	1,790LBS (810kg)
BYPASS MODULE	2,760LBS (1,250g)

REMOVABLE LANDING PLATE  
(SIGNAL WIRING/ BATTERY CABLING)



POWER MODULES (LEFT)  
LEFT SIDE VIEW

BYPASS MODULE  
LEFT SIDE VIEW



FRONT VIEW

POWER MODULES (RIGHT)  
RIGHT SIDE VIEW

FOR RELEASE

QO

MEF

DRAWN BY:  
MEF

DATE  
07/27/20

THIS MATERIAL IS THE EXCLUSIVE PROPERTY OF  
TOSHIBA INTERNATIONAL CORPORATION AND SHALL NOT  
BE REPRODUCED, USED OR DISCLOSED TO OTHERS  
UNLESS PRIOR WRITTEN AUTHORIZATION IS OBTAINED.

TITLE: G9400 1600kVA UPS  
OUTLINE & INSTALLATION DIAGRAM

SCALE  
NTS

ORDER NO.

CHECKED BY  
JBT

DATE  
07/27/20

APPROVED BY  
SU

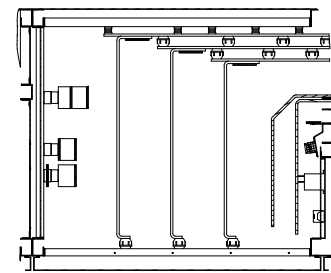
DATE  
07/27/20

DRAWING NO.  
G4UOL-1D6MW3W3-0720MEF

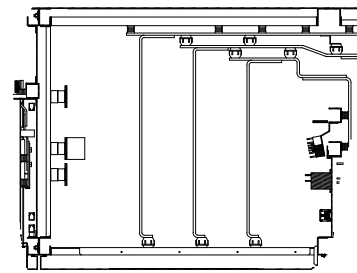
TOSHIBA INTERNATIONAL CORPORATION  
13131 WEST LITTLE YORK ROAD, HOUSTON, TX, 77041 U.S.A.

**NOTES**

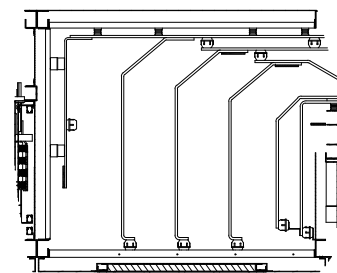
6. EXTERNAL WIRES OR CABLES SHALL BE PROVIDED BY CUSTOMERS FOR AC-INPUT, DC-INPUT, BYPASS-INPUT, AND AC-OUTPUT.
7. ROTATION OF A, B, AND C PHASES IS CLOCKWISE.
8. AC INPUT AND BYPASS INPUT FACTORY BUS BAR JUMPERS INCLUDED FOR SINGLE INPUT. REMOVE BUS BAR JUMPER FOR DUAL INPUT.
9. BOLTS INCLUDED FOR NEMA 2 HOLES ON TERMINAL BUSES



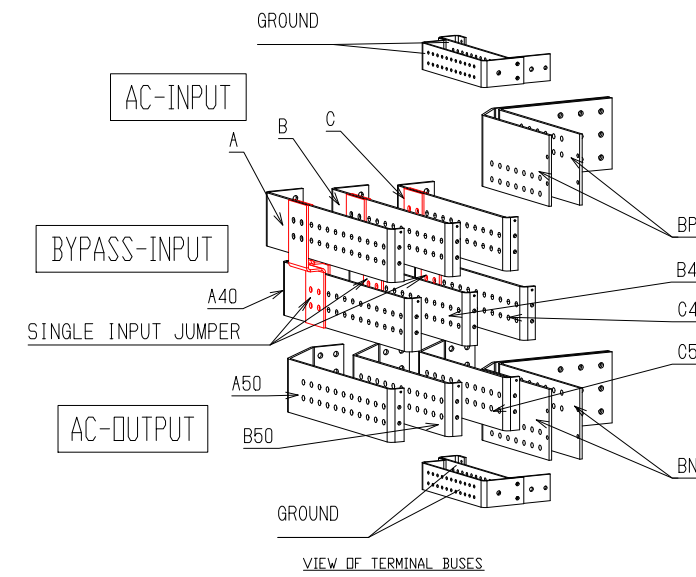
CROSS SECTION B-B



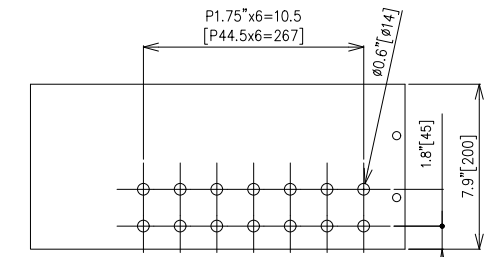
CROSS SECTION C-C



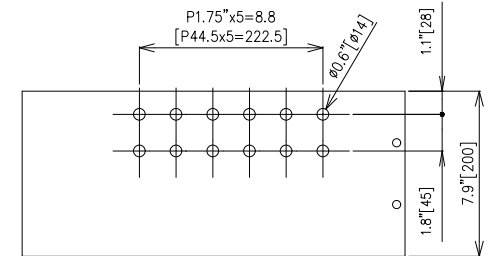
CROSS SECTION D-D



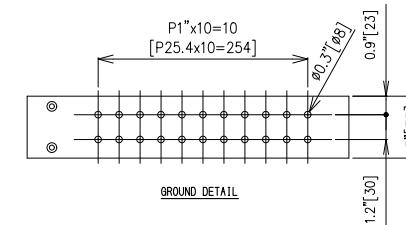
VIEW OF TERMINAL BUSES



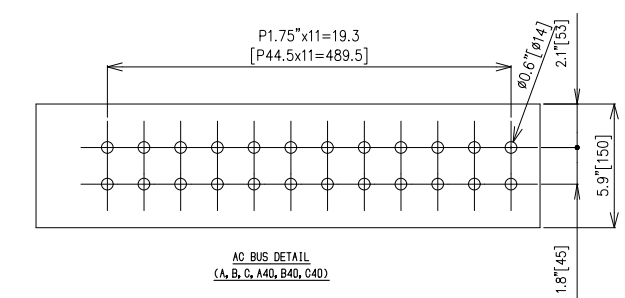
DC BUS (BP, BN) FRONT PIECE DETAIL



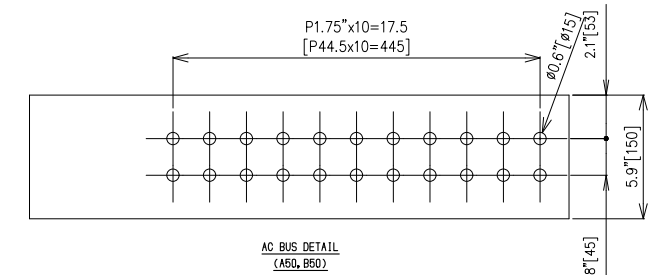
DC BUS (BP, BN) REAR PIECE DETAIL



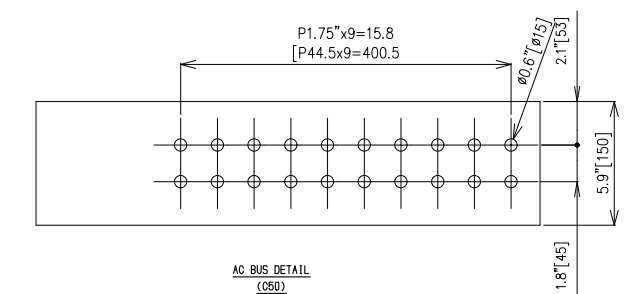
GROUND DETAIL



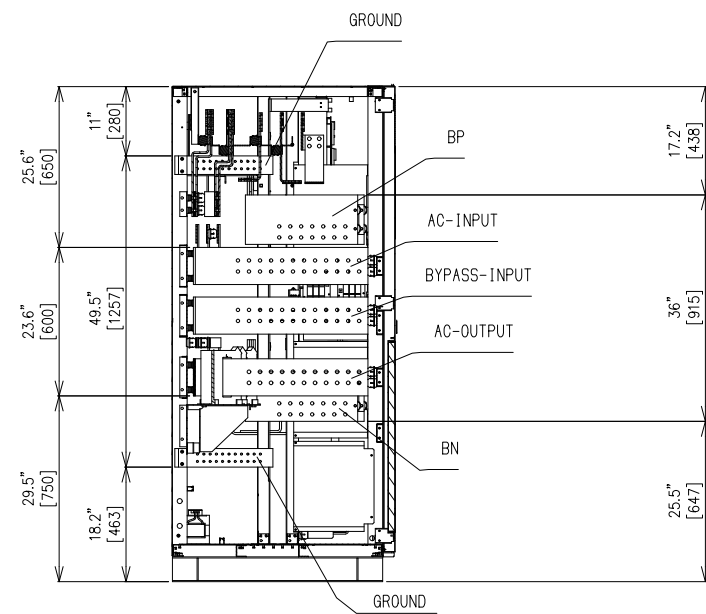
AC BUS DETAIL  
(A, B, C, A40, B40, C40)



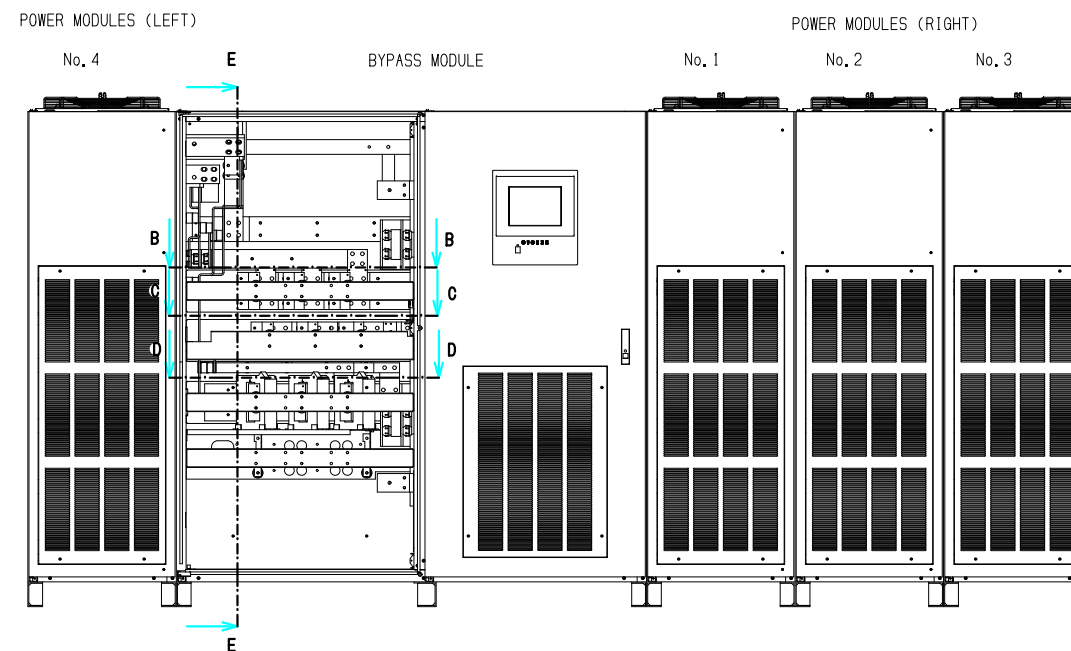
AC BUS DETAIL  
(A, B, C, A40, B40, C40)



AC BUS DETAIL  
(C50)



CROSS SECTION E-E



FRONT INSIDE I/O VIEW

FOR RELEASE

QO

MEF

DRAWN BY:  
MEF

DATE  
07/27/20

THIS MATERIAL IS THE EXCLUSIVE PROPERTY OF  
TOSHIBA INTERNATIONAL CORPORATION AND SHALL NOT  
BE REPRODUCED, USED OR DISCLOSED TO OTHERS  
UNLESS PRIOR WRITTEN AUTHORIZATION IS OBTAINED.

TITLE: G9400 1600kVA UPS  
OUTLINE & INSTALLATION DIAGRAM

SCALE  
NTS

ORDER NO.

CHECKED BY:  
JBT

DATE  
07/27/20

APPROVED BY:  
SU

DATE  
07/27/20

TOSHIBA INTERNATIONAL CORPORATION  
13131 WEST LITTLE YORK ROAD, HOUSTON, TX, 77041 U.S.A.

DRAWING NO.  
G4UOL-1D6MW3W3-0720MEF