

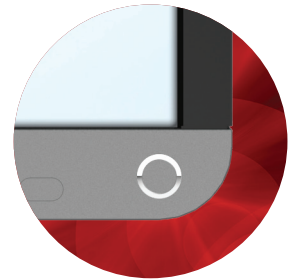
32L2300U LED HD TV

TOSHIBA
Leading Innovation >>>



**BRIGHT IMAGE.
SLEEK DESIGN.**

Big, but never obtrusive, the Toshiba 32" class L2300U is an incredibly versatile, high-definition, slim LED television. Offered in a modern gun metal finish, the L2300U is the perfect TV for any room where you need a larger, quality TV or extra PC monitor. Picture quality features, such as Dynamic Picture Mode and ColorMaster™ make it perfect for entertainment. And ClearScan® 120Hz doubles its refresh rate for clearer fast motion video. It's also equipped with a full set of connections including three HDMI® inputs and features technologies like Game Mode and Game Timer.



All-new, modern curved corner design with an elegant gun metal finish and sleek stand

CS120Hz
ClearScan™

ClearScan® 120Hz doubles the refresh rate for clearer fast motion video

LED TV

Energy-efficient LED backlight for vibrant HD picture quality with sharp contrast for lifelike images with natural shadows and highlights

HDTV
HIGH-DEFINITION TELEVISION

Incredibly vibrant HD picture quality with sharp contrast for lifelike images with natural shadows and highlights

HDMI X3
HIGH-DEFINITION MULTIMEDIA INTERFACE

High-definition video and digital audio through a single cable

**Dynamic
PICTURE MODE**

Dynamic Picture Mode delivers maximum contrast, clarity and color saturation

GAME MODE

Game Mode reduces controller delay for faster video gaming action

AUDYSSEY
EQ
ABX

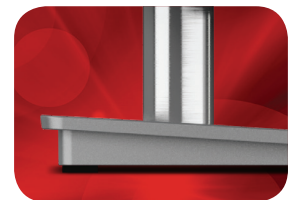
Audyssey EQ® and ABX audio technologies for clear, well-balanced sound

USB MEDIA

Easily connect to your favorite tunes and photos, create slideshows, or listen to your personal playlists

PC INPUT
HIGH DEFINITION

Easily connect your PC to your TV for the big screen experience



32L2300U LED HD TV

TOSHIBA
Leading Innovation >>>

Specifications¹

Screen Size Class: 32"

- Actual Diagonal Screen Size: 31.5"
- Design: Gun Metal Deco and Stand

Panel

- Panel Type: LED
- Resolution: 720p
- Refresh Rate: ClearScan[®] 120Hz
- Backlight Control: DynaLight[®]

Video Chassis

- Dynamic Picture Mode
- ColorMaster[™]
- Native Mode[™]
- Game Mode

Convenience

- Remote Control: TV (CEC)

Audio

- Audyssey EQ[®]
- Audyssey ABX[™]
- Speaker Output: 14W

Connectivity

- HDMI[®] with CEC²: 3
- USB Media: 1
- Composite: 1 (Shared)
- ColorStream[®] Component Video: 1
- High Definition PC Input: 1
- 3.5mm PC Audio Input: 1
- Fixed Analog Audio Out: 1
- Digital Audio Out: 1

Product and Packaging

- VESA Mounting Pattern³: 200mm x 200mm
- Limited Warranty: 1 Year Parts & Labor

Product Dimensions & Weights

- With Stand
 - Dimensions: 28.9" x 19.8" x 7.1"
 - Weight: 12.6 lbs.
- Without Stand
 - Dimensions: 28.9" x 17.3" x 3.3"
 - Weight: 11.7 lbs.
- In Packaging
 - Dimensions: 32.1" x 21.3" x 6.3"
 - Weight: 16.5 lbs.
- Power Consumption (On): 33.5W
- Power Consumption (Stand-by): 0.3W
- ENERGY STAR[®] 6.0 Qualified

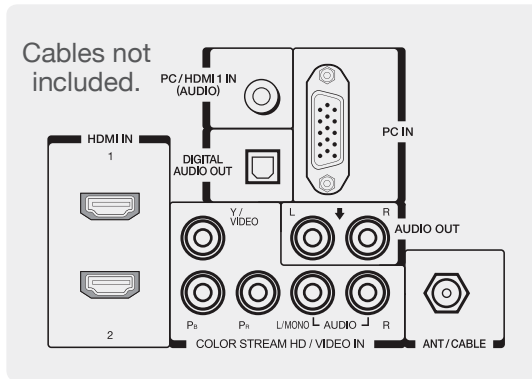
What's in the box

- Remote Control (CT-90325)
- Batteries (AAA x 2)
- Resource Guide
- Quick Start Guide
- Warranty

UPC Code: 022265277003
Country of Origin: China



Remote Control
(CT-90325)



Rear Panel Connector Diagram



Side Ports



Rear Panel

Related Products



Symbio[™] BD3400 Media Box
and Blu-ray[™] Player



Satellite[®] L855-S5112



SBX4250 Sound Bar

1. While every effort has been made at the time of publication to ensure the accuracy of the information provided herein, product specifications, configurations, system/component/options availability are subject to change without notice. 2. Use of HDMI[®] CEC requires an HDMI[®] CEC compatible display/peripheral device. Depending on the specifications of your device, some or all HDMI[®] CEC functions may not work even if your display/peripheral device is HDMI[®] CEC compatible. 3. If you decide to wall mount your Toshiba television, always use a UL Listed wall bracket appropriate for the size and weight of the television. Care should be taken to place or install the display where it cannot be pushed, pulled over, or knocked down.

© 2013 Toshiba America Information Systems, Inc. ClearScan, ColorStream, DynaLight, Native Mode, Satellite and Symbio are registered trademarks or trademarks of Toshiba America Information Systems, Inc. and/or Toshiba Corporation. All other trademarks are the property of their respective owners. All rights reserved.